



Innovation
that excites

NISSAN ALMERA



~~WE MAKE PROMISES.~~ WE KEEP PROMISES.

INTRODUCING NISSAN ASSURED, IT'S MORE THAN A PROMISE. AS PART OF THE NISSAN FAMILY YOU'RE GUARANTEED OUR COMMITMENT TO CUSTOMER CARE. A LASTING BOND BETWEEN YOU, YOUR VEHICLE AND THE NISSAN BRAND. THAT'S OUR PROMISE.

CUSTOMER EXPERIENCE

We promise to make your Nissan experience one to cherish, from your delivery day and everyday after, our commitment is to deliver a service experience you can trust – and believe in.

CUSTOMER SUPPORT ROADSIDE ASSISTANCE

We keep you on the road 24/7. Should anything unexpected happen we guarantee you 24-hour roadside assistance, no matter the age of your Nissan, because it's still a Nissan. Just call **0800 NISSAN (46 77 26)** anywhere, anytime. Terms and Conditions do apply.

LICENCE RENEWAL REMINDER

We'll remind you in advance so you can keep your licence disk up to date.

3 YEAR OR 90 000KM SERVICE PLAN

For the first 3 years or 90 000km of driving your car, whichever comes first, you can rest easy knowing that our promise to you is a kept one. We'll make sure your car is running smoothly and always on the road.

6 YEAR OR 150 000KM WARRANTY

As long as your car is under our warranty, we'll always have you covered if anything goes wrong. You don't need to stress for the first 6 years or 150 000km, whichever comes first.

SERVICE AND REPAIRS FREE VEHICLE HEALTH CHECK

We'll give your car a free health check on every major and minor service prior to any work being carried out, so you know exactly what needs to be done, and how much it will cost.

COMPETITIVELY PRICED PARTS

We deliver the highest care for your Nissan by fitting only Nissan Genuine Parts. The expertise of our Nissan trained teams will also guarantee best value-for-money by finding the most competitively priced part for your local dealer.

COURTESY CAR

We will arrange a courtesy car for all warranty repairs if your vehicle is in for more than 48 hours.



NISSAN ASSURED

More than a Promise

Call **0800 NISSAN (64 77 26)**
or visit www.nissan.co.za for more information.

NEXT GENERATION NISSAN ALMERA FOR THE NEXT GENERATION YOU



FOR THOSE WHO WANT TO LIVE LARGE

Everything you thought you knew about owning a compact sedan is about to change. No longer will compact sedans stand in the shadow of their larger relatives. No longer will you have to compromise style for space, form for function, technology for affordability. Never again will you have to choose between performance and practicality, or pay a premium to transport your family around in the style, safety and comfort they deserve. Now you can have it all with the Nissan ALMERA.





SPACIOUS COMFORT

Welcome to a big new day, where generous legroom is a given, where headroom is never in short supply, and where even the tallest can stretch out in comfort. Thanks to the revolutionary design of the Nissan ALMERA, owners can enjoy class-defying comfort and versatility in a beautifully compact package. The Nissan ALMERA provides the perfect balance of superior space for driver, passengers and luggage, all in one compact sedan that's truly big enough for everyone. Think premium space minus the premium price tag.

PERFORMANCE AND ECONOMY

The Nissan ALMERA is powered by an impressive 1.5 litre petrol engine available in manual or automatic transmission, delivering 73kW of power with 134Nm of torque – enough to get you from A to B in no time. While the Nissan ALMERA feels like a big car on the inside, it still offers small sedan efficiency. How does 6.3 litres per 100km (manual transmission mode) or 550km* on a single tank sound? When it comes to performance and outstanding fuel economy, the Nissan ALMERA really is the intelligent choice for those looking for big value for money.



* Actual fuel consumption will vary depending on driving conditions, driver behaviour, the condition of your vehicle and the accessories fitted.



INTERIOR

Step inside and the Nissan ALMERA delivers confident and modern sophistication that is practical, ergonomic, functional and aesthetically pleasing. The intelligently designed cabin layout puts all the controls you need right at your fingertips, from audio control to boot release, powered mirror control to remote central locking.

Storage space is nothing short of abundant. A spacious glovebox, centre console and door pockets provide convenient compartments for your MP3 player and cellphone.

High quality finishes compliment the vehicle's stylish design, while easy-to-read dials keep the driver up to date at all times. Passenger comfort is also not compromised, the Nissan ALMERA sports a rear centre armrest with cupholders, rear fan and adjustable rear head rests. The Nissan ALMERA's advanced design contributes to the dramatic reduction of wind and road noises within the cabin, even at speed.

The Nissan ALMERA's audio system features Bluetooth audio streaming, MP3 and USB connectivity so you can enjoy your tunes just the way you like them. With handsfree Bluetooth capability and steering wheel audio controls, you are safe and in complete control wherever you drive. Now that sounds good.



THE FREEDOM TO EXPLORE NEW DESTINATIONS



TECHNOLOGY

The Nissan ALMERA is also big on the latest technology, all designed to make your life easier, safer and more enjoyable.

MULTI-FUNCTION DRIVE COMPUTER

Puts all the information you need right where you need it: in plain sight on the multi-information display.

FUEL ECONOMY



Up to the second info on how your fuel consumption is performing.

DRIVING RANGE



Takes the guesswork out of the distance remaining until you need to fill up.

EYES IN THE BACK OF YOUR HEAD

Reversing is a breeze with rear parking sensors that ensure even the tightest parking spots become a precision exercise.





BIG ON BOOT SPACE

The boot space in the Nissan ALMERA is astonishingly generous. A full 490 litres of capacity with a deep loading area, a low loading sill and smooth surfacing inside allows you to load up with room to spare.

With enough boot space for the whole family's needs, shopping, sporting events or holidays all become pleasure cruises.

SAFETY

The Nissan ALMERA comes with an impressive array of safety features that are designed to keep you and your passengers safe and sound.

A HELPING HAND

THE ANTI-LOCK BRAKING SYSTEM (ABS) prevents wheel lockup during heavy braking which allows the driver to continue steering safely.

ELECTRONIC BRAKE-FORCE DISTRIBUTION (EBD) sends extra energy to the rear brakes if and when it senses additional weight in the back of the vehicle, increasing stopping power and reducing stopping distance.

FOREWARNED IS FOREARMED. Halogen headlights ensure excellent visibility for increased open-road safety, allowing you to see what's ahead better than ever before.

MAXIMISING PROTECTION

When a collision is unavoidable, additional safety technology built into the Nissan ALMERA helps reduce injuries and limit damage as much as possible.

ZONE BODY CONSTRUCTION features advanced safety technology that includes a clearly defined crushable zone to absorb and disperse impacts, with a high-strength cabin safety zone to maximise passenger protection.

Driver and passenger **SRS** (Supplemental Restraint System) airbags deploy automatically in the event of severe frontal impact, reducing the risk of injury.

In addition, **ISOFIX** child seat anchorage points, together with 3-point ELR seatbelts for all passengers, ensure the Nissan ALMERA keeps everyone firmly in the safety zone.



SAFETY SHIELD

SAFETY SHIELD

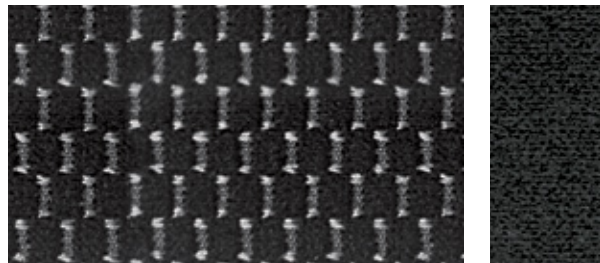
In the commitment to "Real World Safety", Nissan pursues innovation as part of its Safety Shield concept. Based on the idea that cars should help protect people, advanced, proactive safety technologies help driver and passengers to avoid danger and injury in a wide range of circumstances. Visit www.nissan.co.za to find out more.

COLOURS



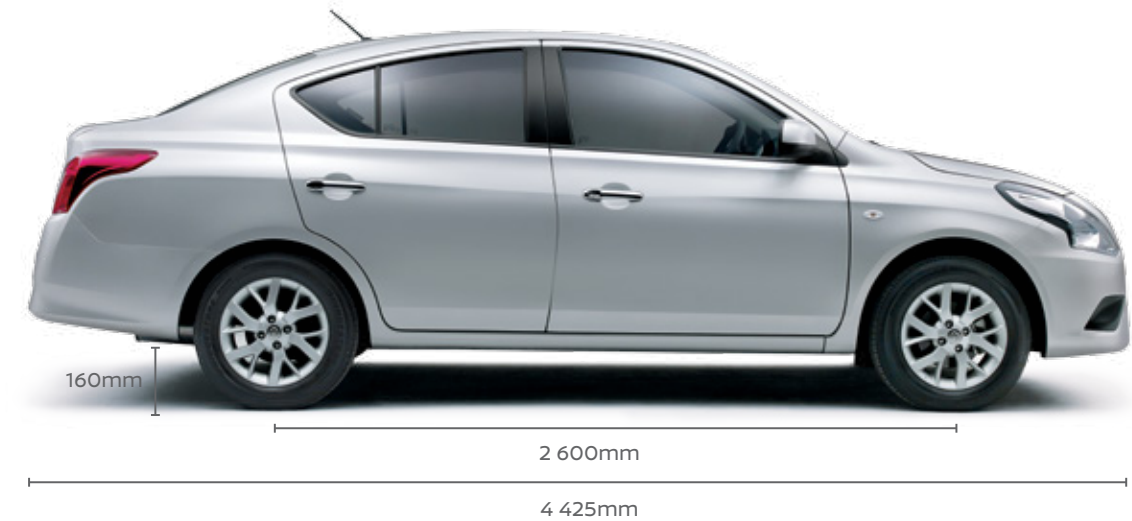
M - Metallic
S - Solid

TRIM



Stylish yet practical black fabric with white stitching.

DIMENSIONS



Model		Almera 1.5 Acenta MT	Almera 1.5 Acenta AT
Transmission		5-speed Manual	4-speed Auto
ENGINE AND PERFORMANCE			
Maximum power	kW/rpm	73 @ 6000	73 @ 6000
Maximum torque	Nm/rpm	134 @ 4000	134 @ 4000
Engine displacement	cc	1498	1498
Fuel type		Unleaded petrol	Unleaded petrol
Fuel tank capacity	litres	41	41
Fuel consumption (combined cycle)	ℓ/100km	6.3	7.2
Emmissions category		Euro 2	Euro 2
CO ₂ Emissions	g/km	149	171
DIMENSIONS			
Overall length of vehicle	mm	4425	4425
Overall width of vehicle	mm	1695	1695
Overall height of vehicle	mm	1505	1505
Wheelbase	mm	2600	2600
Ground clearance	mm	160	160
Tare mass	kg	1042	1042
Min. turning circle	m	5.2	5.2
SUSPENSION			
Macpherson strut : Front		Standard	Standard
H type torsion beam : Rear		Standard	Standard
WHEELS/TYRES			
Wheel size/type		15" Alloy	15" Alloy
Tyre size		185/65 R15	185/65 R15
Spare wheel		Full size	Full size
SAFETY			
Brake type		Front discs, rear drums	Front discs, rear drums
Airbags		Driver and Passenger	Driver and Passenger
Front seat belt		3 point ELR, single pretensioner with load limiter	3 point ELR, single pretensioner with load limiter
Rear seat belt		3 point ELR for R&L, Center : 3 point with ELR	3 point ELR for R&L, Center : 3 point with ELR
Seat belt reminder		Driver only	Driver only
Anti-lock Braking System (ABS)		Standard	Standard
Electronic Brake-force Distribution (EBD)		Standard	Standard
Brake Assist (BA)		Standard	Standard
ISOFIX child seat anchors & tether anchor		Standard	Standard
High mounted stop light		Standard	Standard
NATS Immobilizer		Standard	Standard
Nissan DataDot anti-theft identification system		Standard	Standard

Model		Almera 1.5 Acenta MT	Almera 1.5 Acenta AT
EXTERIOR			
Colour coded bumper		Standard	Standard
Door handles		Chrome Plating	Chrome Plating
COMFORT & CONVENIENCE			
Halogen head light		Standard	Standard
Head light leveliser (manual)		Standard	Standard
Head light auto off function (Follow me home)		Standard	Standard
Door mirror		Manual folding & Electric operating, coloured	Manual folding & Electric operating, coloured
Front wiper		Intermittent & mist wipe	Intermittent & mist wipe
Rear fog light		Standard	Standard
Clock: Digital		Standard	Standard
Rear parking sensor		Standard	Standard
Air-conditioner		Manual A/C	Manual A/C
Audio system		2DIN AM/FM Radio, CD, MP3, USB with AUX	2DIN AM/FM Radio, CD, MP3, USB with AUX
Handsfree Bluetooth		Standard	Standard
No of Speakers		4	4
Driver's seat function		Slide & reclining & lifter	Slide & reclining & lifter
Passenger seat		Manual Slide & reclining	Manual Slide & reclining
Rear seat		Fixed with center arm rest	Fixed with center arm rest
Luggage room/trunk lamp		Standard	Standard
DRIVER'S AREA			
Tachometer		Standard	Standard
Steering wheel type		Urethane	Urethane
Powered & tilt steering wheel		Standard	Standard
Steering wheel controls		Handsfree Bluetooth & audio	Handsfree Bluetooth & audio
Power door lock		Driver, speed sensing auto door lock	Driver, speed sensing auto door lock
Key with remote entry system		With immobilizer & remote key	With immobilizer & remote key
Power window		Front and Rear	Front and Rear
Drive computer - trip meter, fuel consumption & cruise range		Standard	Standard
Room lamp		Standard	Standard
Map lamp		Standard	Standard
Cup holders		Center Console: FR x 2 & RR x 1 and RR armrest	Center Console: FR x 2 & RR x 1 and RR armrest
Glove box with lid		Standard	Standard
12V Power outlet		Standard	Standard
SERVICE & WARRANTY INFORMATION			
Service intervals		15 000km	15 000km
Service Plan		3 year/90 000km	3 year/90 000km
Roadside Assistance		6 year/150 000km	6 year/150 000km
Paint & Mechanical warranty		6 year/150 000km	6 year/150 000km
Anti-corrosion warranty		3 year/unlimited km	3 year/unlimited km

LEGAL NOTICE

Every effort has been made to ensure that the content of this brochure is correct at the time of going to print (August 2016). This brochure has been produced featuring prototype or accessorised vehicles exhibited at motor shows and, in accordance with the company's policy of continuously improving its products, Nissan South Africa reserves the right to change the specification and the vehicles described and shown in this brochure at any time. Nissan Dealers will be informed of any such modifications as quickly as possible. Please check with your local Nissan Dealer to receive the most up-to-date information. Due to the limitations of the printing processes used, the colours shown in this brochure may differ slightly from the actual colours of the paint and interior trim materials used. All rights reserved. Reproduction in whole or part of this brochure without the written permission from Nissan is forbidden. Quoted fuel consumption and emission values have been established using the prescribed method of measurement (United Nations Economic Commission for Europe "ECE" Regulation R101 in the current version) as required under current legislation. This data does not pertain to the specific vehicle and does not comprise part of the offer, but is supplied for the purpose of comparison between the various types of vehicles, in accordance with 1999/94/EC. Driving behaviour/conditions and other non-technical factors contribute towards a vehicle's fuel consumption and CO₂ emissions over and above the determined fuel efficiency of a vehicle.



Nissan's commitment to the environment

Nissan's environmental philosophy embraces people, vehicles and nature. In the pursuit of a sustainable mobile society, the Nissan Green Program aims to reduce the environmental impact of Nissan vehicles at every stage of the vehicle life cycle, while corporate activities address environmental challenges.

NISSAN'S commitment to quality: to provide all customers with a consistently high level of quality, Nissan applies the standard worldwide to ensure that all Nissan owners enjoy peace of mind for the lives of their vehicles. The approach is based on quality from the customer's perspective on three key elements: 1. The expectation of a smooth driving experience with complete peace of mind. 2. The intangible appeal of a vehicle, its power to captivate and excite, with features that capture attention and imagination. 3. The level of attentiveness and service during the sales process, and long after the sale is concluded.

visit our website at: www.nissan.co.za

Phone us toll free on: 0800 NISSAN (647 726)

Follow Nissan on:

 /NissanSouthAfrica

 @Nissanza

August 2016
BR16E-N17ZA0